

Description

The Inline PCBA cleaning machine ET-6000E is an online, integrated, fully automatic PCBA cleaning machine designed for the online cleaning of organic and inorganic contaminants such as rosin flux and no-clean flux residue on the surface of PCBA after SMT and THT soldering processes. It is widely used in industries such as automotive electronics, military, aerospace, aviation, communications, medical, Mini LED, smart meters, and other industries. It is suitable for large-scale centralized cleaning of PCBA, balancing cleaning efficiency and effectiveness.

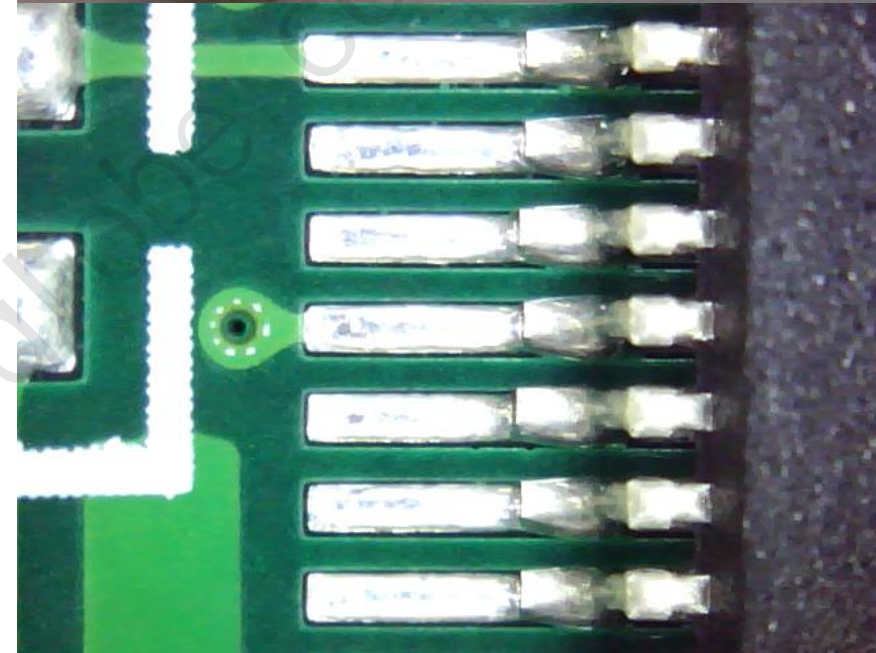
Features

The Inline PCBA cleaning machine is a high-capacity system designed for large-scale cleaning of PCBA assemblies. It utilizes a high-flow cleaning method to effectively remove organic and inorganic contaminants such as solder flux residue from PCB pads and product surfaces.

The cleaning process of this machine includes pre-cleaning, cleaning, chemical isolation, pre-rinsing, rinsing, final spray rinsing, air knife drying, and infrared hot air drying, all completed in sequence. It features automatic addition and discharge of cleaning solution, as well as automatic replenishment and updating of DI water using a back-to-front overflow method.

With adjustable pressure for both cleaning solution and DI water, the machine employs top and bottom spray cleaning methods to ensure thorough cleaning. It also utilizes high-pressure and high-flow chemical cleaning to penetrate the bottom gaps of components like BGA and CSP.

Equipped with multiple spray arms and various nozzles configurations, the machine is suitable for cleaning PCBAs with different micro-spacing and high precision requirements. It features pH value detection, resistance monitoring systems, and real-time monitoring of the quality of cleaning solution and rinsing water.





Welcome inquiry

1, Please visit : www.smtglobe.com

2, Welcome to our factory in China

7, Looking forward to your email: info@smtglobe.com

8. Wechat/Whatsapp/skype: +86 13825296910